

## Table of Contents

Event analysis I.....	2
Edit Event Types.....	3
Delete Event Type.....	3
Mark an Event.....	3
Remove Selected Event.....	3
Event operations.....	3
Disable/show data series.....	3
Create an event type.....	4
Mark an event.....	5
History.....	8

# Event analysis I

## Manual events

This tutorial shows how to create and define events manually.

Open or create a project and click the **Create Event Graph** button



The following window appears:

**Create Event Graph**

1. Select series for event chart

☒ Depth(m)

2. Select parameter type

☐ Behavioral

☐ Ambient

☒ **Manual**

3. Set event conditions (behavioral only)

Define minimum event duration

- Minimal number of points:

Define minimum event amplitude

☐ Percentage of range (0-100%):

☒ Absolute value (m)

4. Define amplitude levels

Number of levels:

☒ Automatic definition

Level	from	to
L1	2,54	48,84
L2	48,84	95,15
L3	95,15	141,45
L4	141,45	187,76
L5	187,76	234,06

<< >>

Status: OK

OK Cancel

Figure 1 Create event graph

1. Select series for event chart
2. Select type of event, in this case **Manual**
3. Click **OK**

The following chart appears:

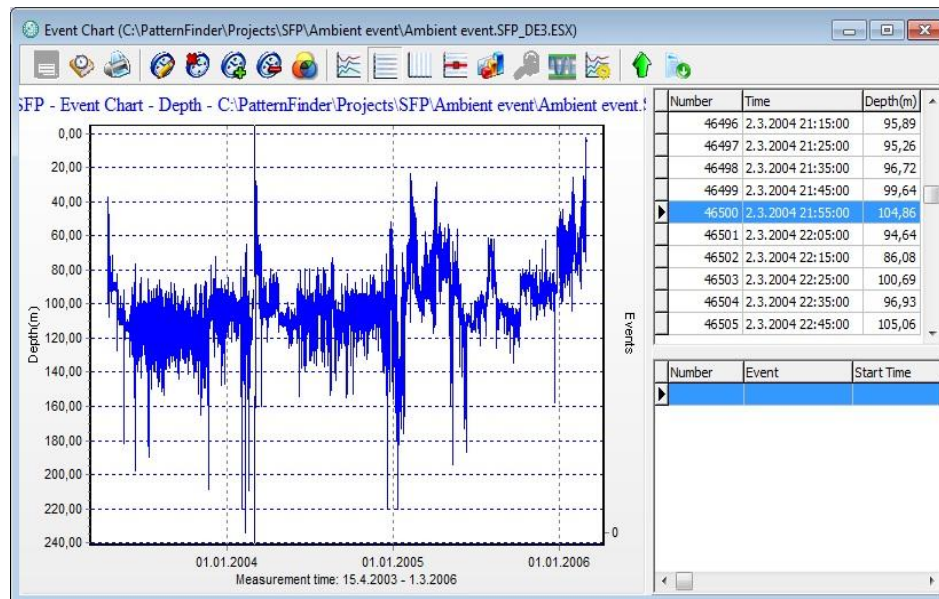


Figure 2 Event chart

There are five event operation buttons in the event chart (these options are available on every type of event charts: ambient, behavioral, multiple):



**Edit Event Types**



**Delete Event Type**



**Mark an Event**



**Remove Selected Event**



**Event operations**

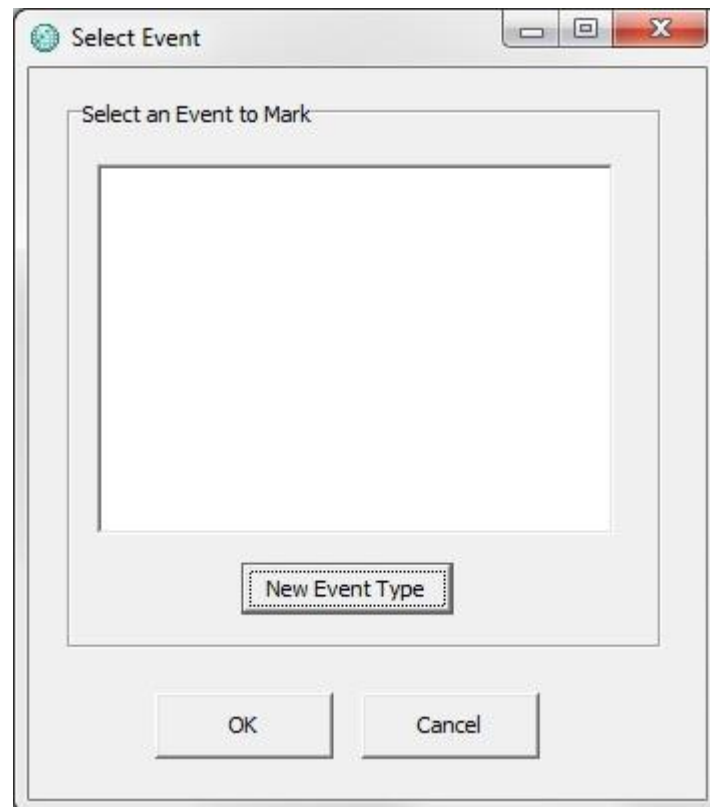
(See tutorial 18)



**Disable/show data series**

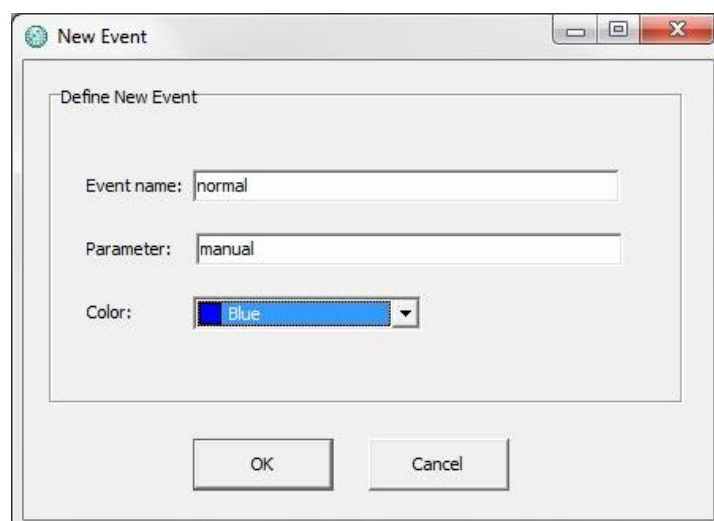
## Create an event type

To create an event, click the **Mark an event** button on the chart bar. The following window appears:



*Figure 3 New Event Type*

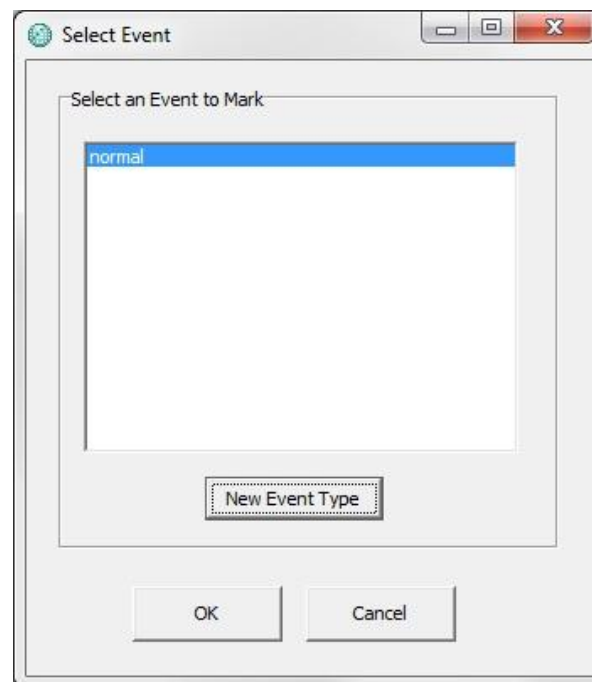
Select **New Event Type** and the following window appears:



*Figure 4 New event*

Insert the event name and the parameter and choose a color.

The event will be added to the list of event types (see figure 5).



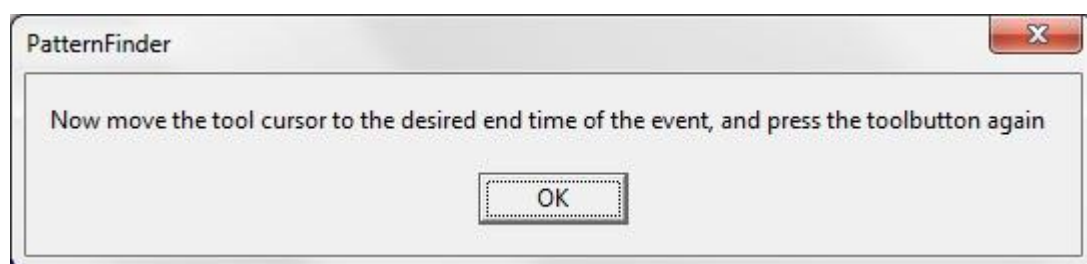
*Figure 5 New Event Type*

## Mark an event

To mark an event on the chart you first need to position the cursor on the point where you want to begin the event and click the **Mark an event** button on the chart bar.

Select an event type from the list (see figure 5).

Click **OK** and the following window appears:



*Figure 6 PatternFinder*

Move the cursor to the point where you want to end the event and click the **Mark an Event** button again.

The event will be marked on the chart as can be seen in figure 7.

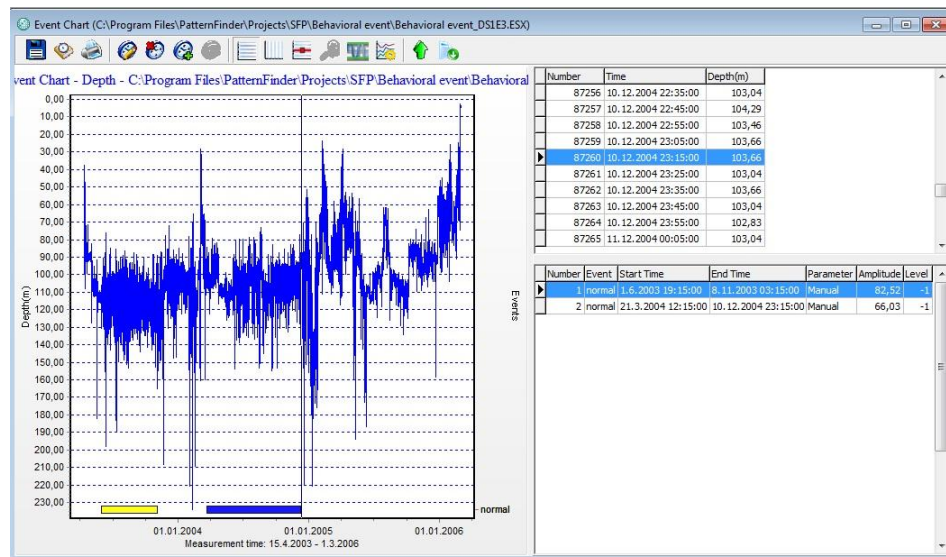


Figure 7 Event chart

To remove an event from the chart, highlight the event and click the **Remove Selected Event** button.

You can edit the name, description and color of the event type by clicking the **Edit Event Types** button (see figure 8).

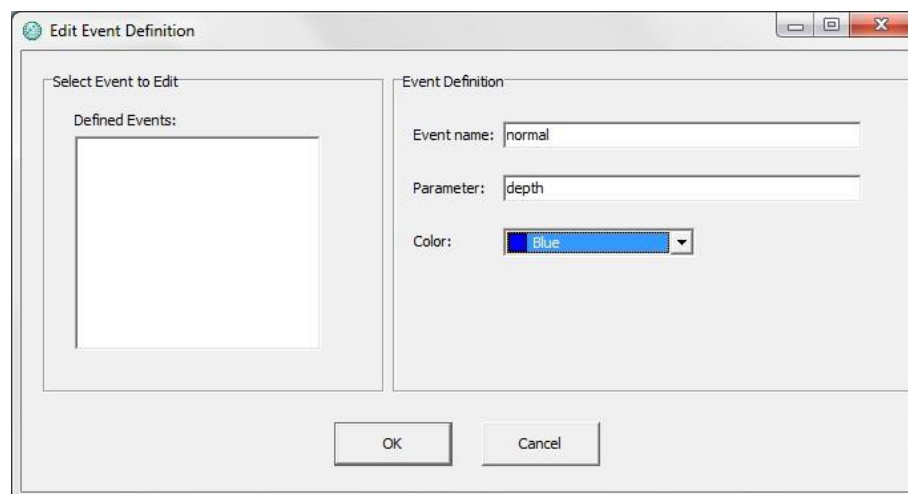
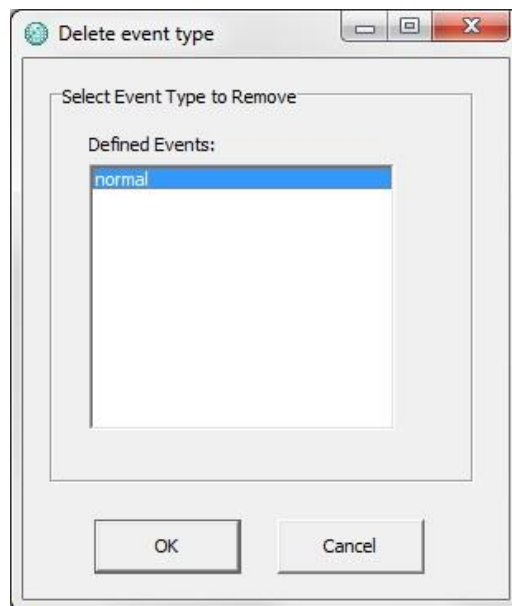



Figure 8 Edit Event Definition

You can also delete the event type by clicking the **Delete Event Type** button (see figure 9).



*Figure 9 Delete event type*

# History

Click the **History** button  on the chart bar to add comments and view information on the origin of the signal and the progress of the project (see figure 10). Click **Print** to print out the information (see figure 11).

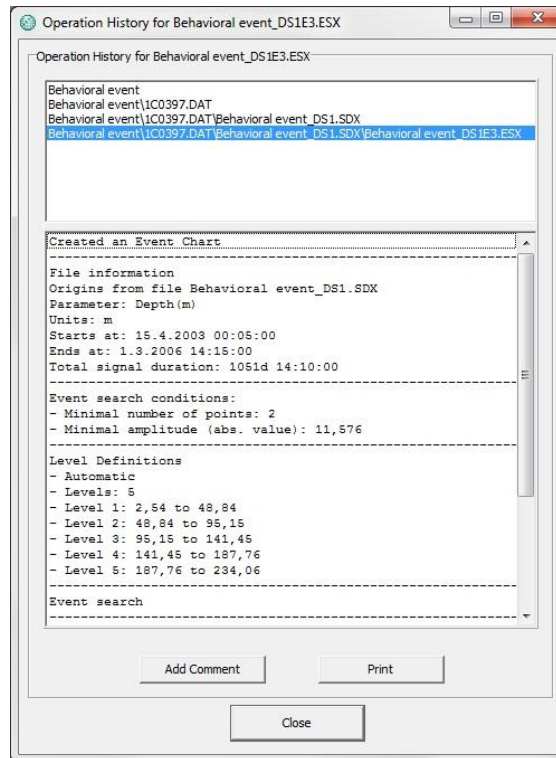


Figure 10 History

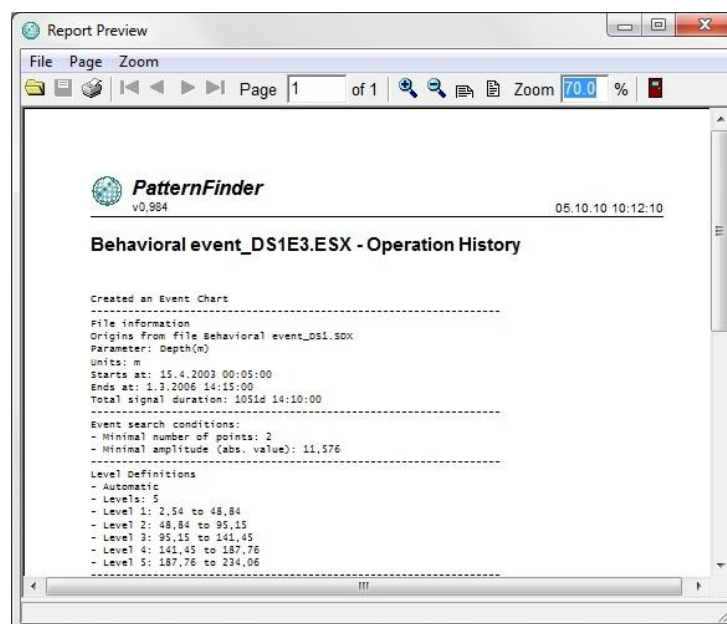


Figure 11 Print Preview